

Changing NMEA2000 instances

1. Introduction

Instances are used in an NMEA2000 network to identify multiple similar products connected on the same network.

As an example, take a system with two battery monitors (one for the main battery bank, and another for the hydraulic-thruster bank) and also a Quattro inverter/charger. All three of those devices will send their battery voltage measurements out on the canbus.

For the displays to show these values at the right place, they need to know which voltage belongs to what battery.

Before going ahead and change instances, please make sure to first study [the NMEA2000-out chapter in the GX manual](#).

How can I change the instances?

This document describes three options:

1. Use [Actisense](#) software & hardware. Can change both the device- and data-instances
2. Use [Maretron](#) software & hardware.
3. From the [commandline](#) of a [GX device](#). Note that this is a software developer trick. Not for any day use.

Device instance, data instances and other instances

There various types of instances. Please make sure to study [the NMEA2000-out chapter in the GX manual](#) before continuing.

In summary, and as per NMEA2000 specification, it should not be necessary to change a data instance such as the DC instance.

Required hardware

Changing the device instance requires an usb-canbus adapter to link the CAN-bus network to your computer:

- For Actisense, see the [Actisense NGT-1](#)
- For Maretron, see their [USB100](#)

Related information

For more detailed information, see also the FAQ in our [Data communication whitepaper](#).

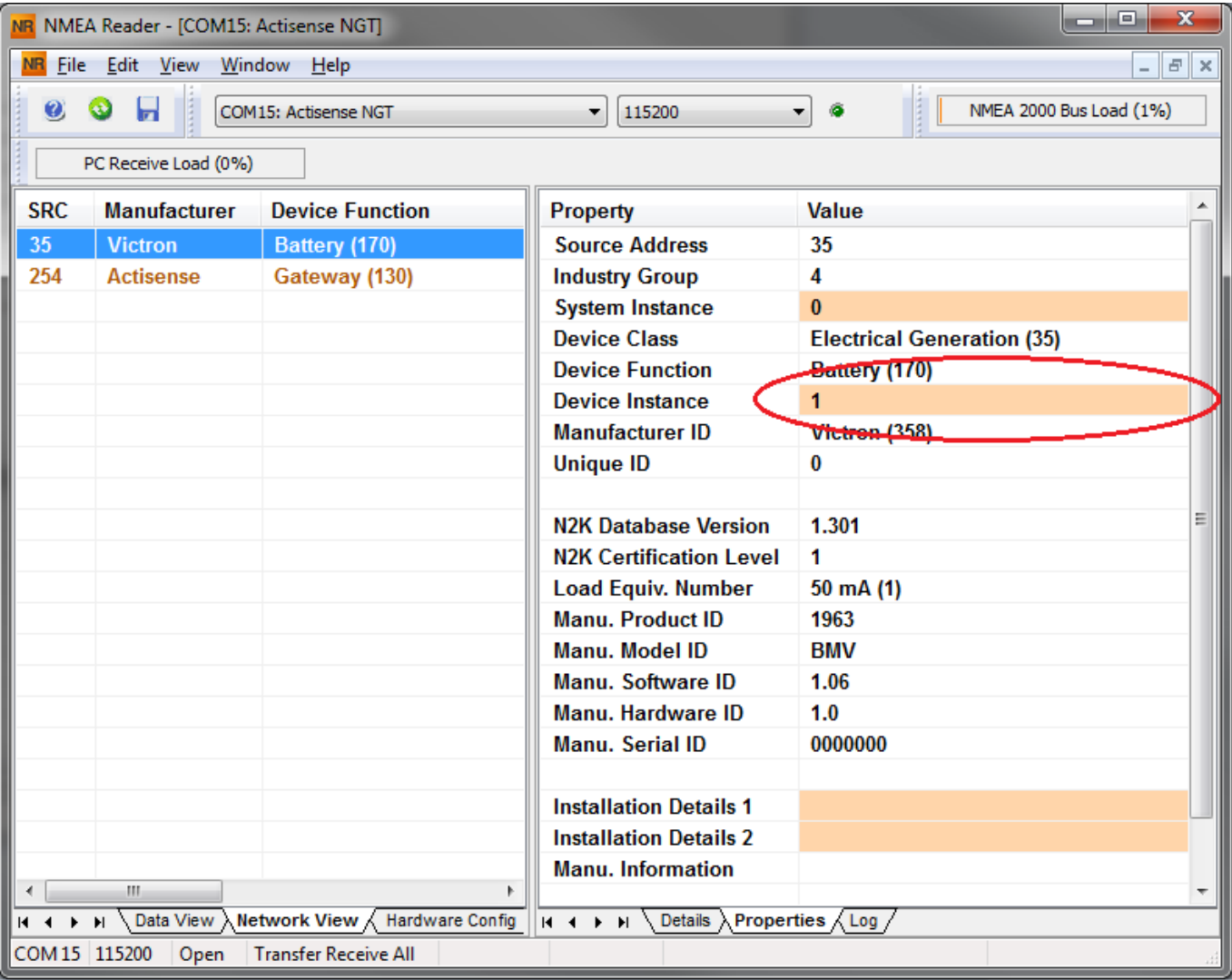
And the main [NMEA2000 integration guide](#).

2. Changing the device instance with Actisense

Note: make sure to use a recent Actisense driver. Otherwise the instance might not ‘stick’.

Changing a device instance:

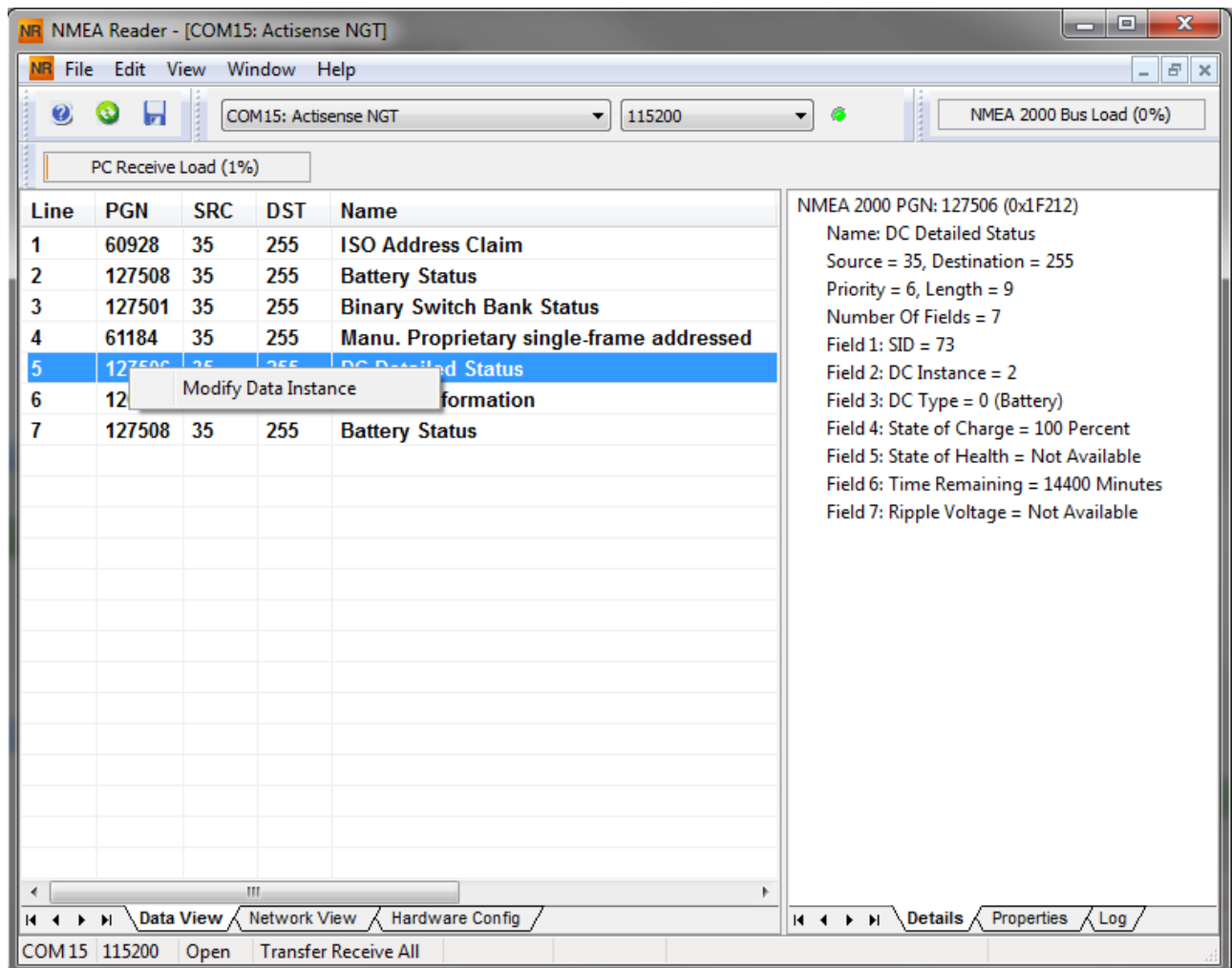
- 1. Open Actisense NMEA Reader
- 2. Select the network view (tab selection is at the bottom left)
- 3. Select the product whose device instance you want to change
- 4. Select the properties tab at the bottom right and change the device instance



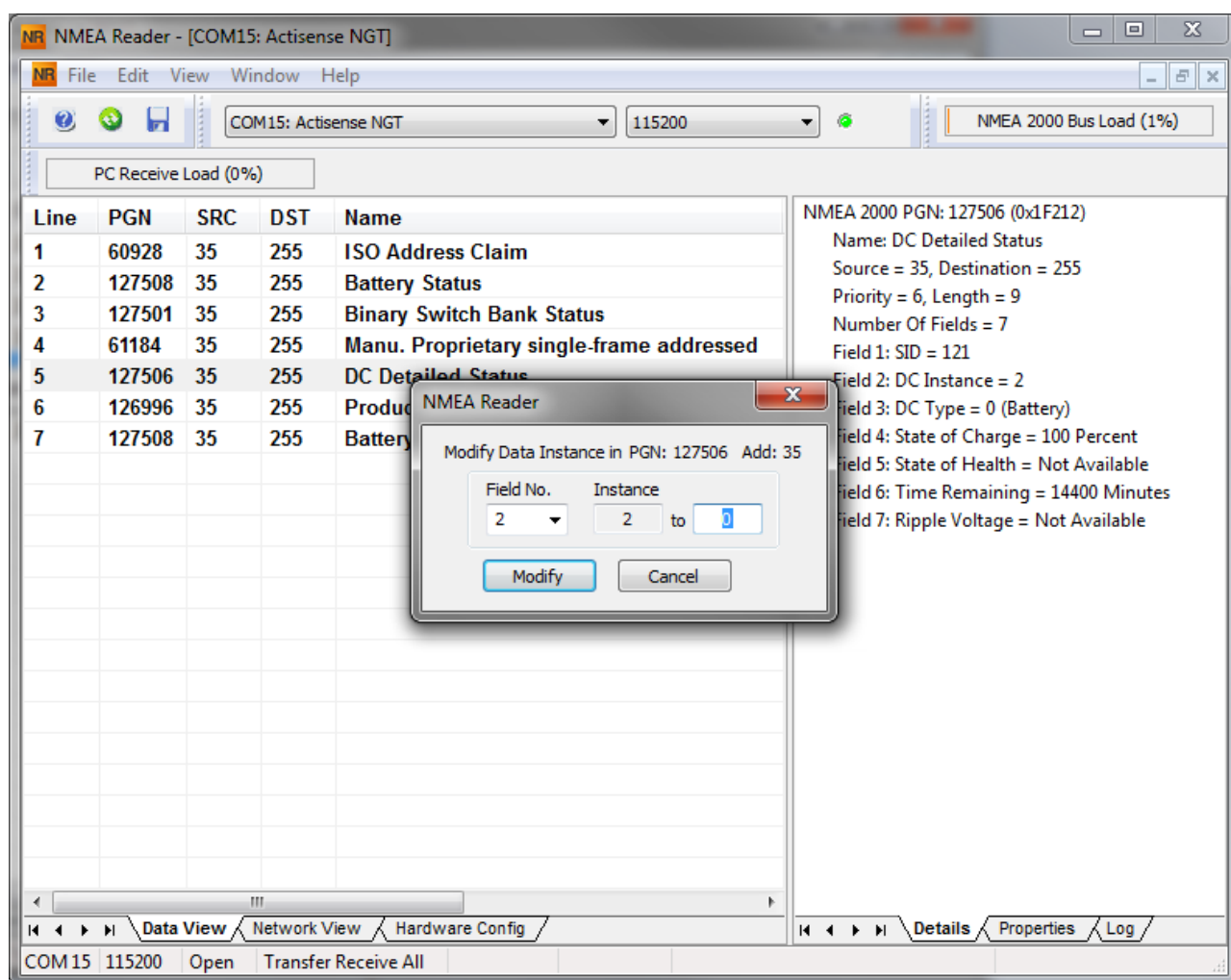
3. Changing a data instance with Actisense

Changing a data instance:

1. Open Actisense NMEA Reader
2. Select data view (tab selection is at the bottom left)
3. Right click on the PGN number. Note that this will only work on PGNs that allow changing their data instance:



4. And change the value:



Notes for BMVs, Lynx Shunt and the Lynx Ion + Shunt:

- The Battery Instance and the DC Detailed instance are the same value. Changing one of them, will also change the other one.
- Since the BMV sends out two voltages, the main voltage and the aux- or starter-voltage, it comes preconfigured with two battery instances: 0 and 1. When you want to change that to 1 and 2, change the 1 into 2 first, and then the 0 into 1, as they cannot be the same.

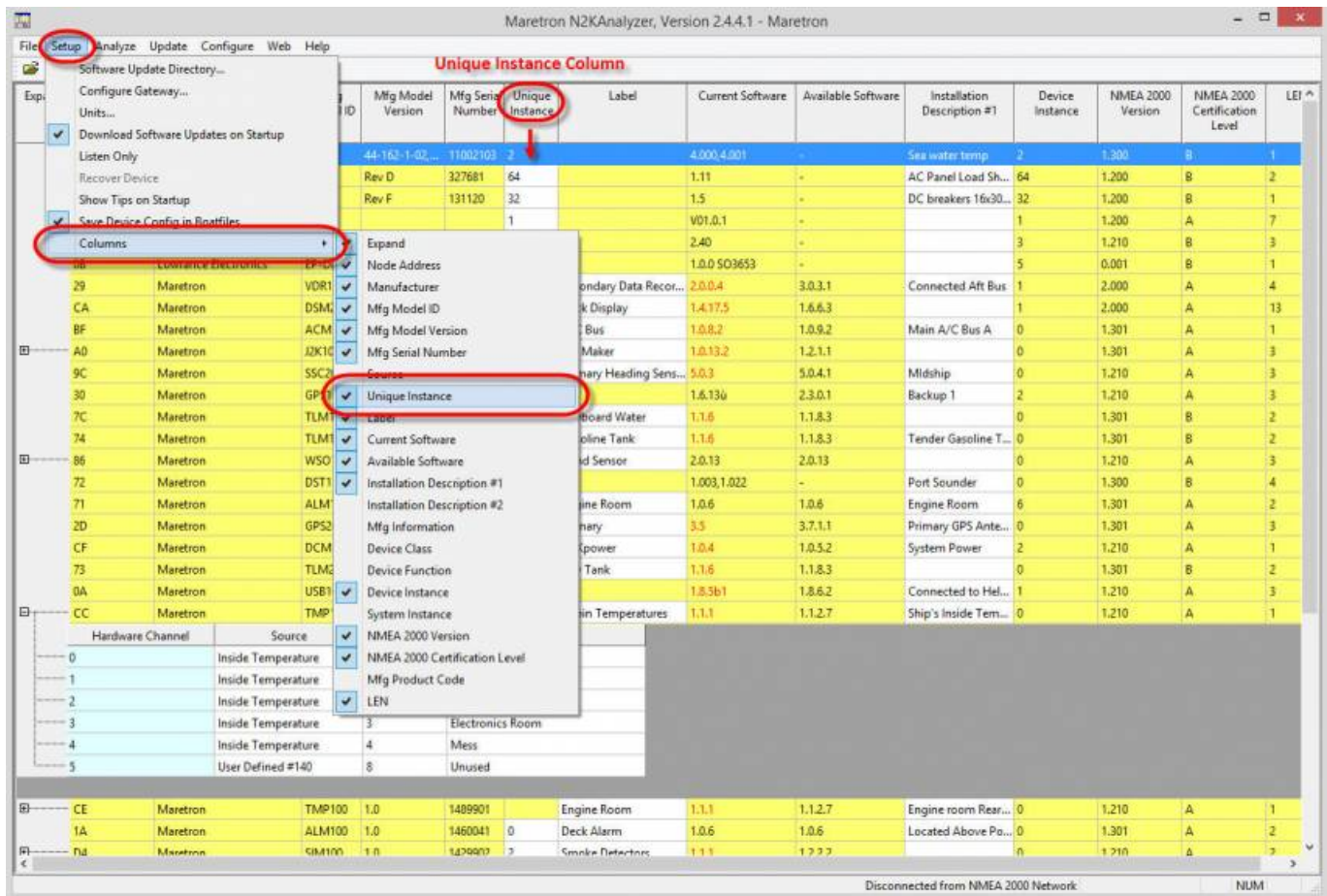
4. Changing Instance Using Maretron N2KAnalyzer

Maretron uses a term called "Unique Instance" where the N2KAnalyzer software tool automatically determines if a particular device uses device or data instances.

WARNING: At Victron we do not understand what and how the Maretron software works with regards to this. We advise to use another tool, not Maretron, so that you know what you are doing, ie know what instance you are changing. So far, we have not been able to use Maretron software to change a data instance. And changing the other instance, the device instance can also be done straight from the Victron GX device its user interface. To change a data instance, for example to fix instance conflicts as reported by the Maretron software, we recommend to use Actisense. Not Maretron.

Open N2KAnalyzer and make sure that the "Unique Instance" column is turned on (i.e. checked) using

the Setup>Columns menu item.



Within the N2KAnalyzer main window, any cell with a white background can be edited by clicking in the cell and typing in the desired value. You can see from the following screen shot that a few parameters have a white background including Label and Installation Description #1. To change a device's instance, click in the Unique Instance cell for the device you want to change and type the new number followed by a carriage return. If the particular product accepts the instance change, you will see the new instance number reflected in the cell. You can also use a tool within N2KAnalyzer to check that all products on the network are uniquely instanced. Use the Analyze>Instancing menu to verify correct overall system instancing.

Expand	Manufacturer	Mfg Model ID	Mfg Model Version	Mfg Serial Number	Unique Instance	Label	Current Software	Available Software	Installation Description #1	Device Instance	NMEA 2000 Version	NMEA 2000 Certification Level	LEI
23	Carling Technologies	DC16	Rev F	131120	32		4.000.4.001	-	Sea water temp	2	1.300	B	1
2F	AC08	Rev D	327681	64			1.11	-	AC Panel Load Sh...	64	1.200	B	2
1C	Floscan Instrument Co., I...	VDR100	1.0	1760015	1	Secondary Data Recor...	2.0.0.4	3.0.3.1	Connected Aft Bus	1	2.000	A	4
11	Garmin	GPS17...	1.00	3431140...	3		2.40	-		3	1.210	B	3
0B	Lowrance Electronics	EP-DDS	1.0.0	316	5		1.0.0 SO3653	-		5	0.001	B	1
29	Maretron	DSM250	1.0	1300176	1	Deck Display	1.4.17.5	1.6.6.3		1	2.000	A	13
CA	Maretron	ACM100	1.0	1389904	0	A/C Bus	1.0.8.2	1.0.9.2	Main A/C Bus A	0	1.301	A	1
BF	Maretron	J2K100	1.0	1241404	0	ICE Maker	1.0.13.2	1.2.1.1		0	1.301	A	3
A0	Maretron	SSC200	2.0	1120707	0	Primary Heading Sens...	5.0.3	5.0.4.1	Mildship	0	1.210	A	3
9C	Maretron	GPS100	1.1	1140232	2		1.6.130	2.3.0.1	Backup 1	2	1.210	A	3
30	Maretron	TLM100	1.0	1500082	0	Starboard Water	1.1.6	1.1.8.3		0	1.301	B	2
7C	Maretron	TLM100	1.0	1529901	0	Gasoline Tank	1.1.6	1.1.8.3	Tender Gasoline T...	0	1.301	B	2
74	Maretron	WSO100	2.0	1201734		Wind Sensor	2.0.13	2.0.13		0	1.210	A	3
86	Maretron	DST110	D235-S1-TS...	*	0		1.003.1.022	-	Port Sounder	0	1.300	B	4
72	Maretron	ALM100	1.0	1469902	5	Engine Room	1.0.6	1.0.6	Engine Room	6	1.301	A	2
71	Maretron	GPS200	2.0	15266	0	Primary	3.5	3.7.1.1	Primary GPS Ante...	0	1.301	A	3
2D	Maretron	DCM100	1.0	1400046	1	N2Kpower	1.0.4	1.0.5.2	System Power	2	1.210	A	1
CF	Maretron	TLM100	1.0	1540111	2	Day Tank	1.1.6	1.1.8.3		0	1.301	B	2
73	Maretron	USB100	1.0	1160258	1		1.8.5b1	1.8.6.2	Connected to Hel...	1	1.210	A	3
0A	Maretron	TMP100	1.0	1480009		Cabin Temperatures	1.1.1	1.1.2.7	Ship's Inside Tem...	0	1.210	A	1
CC	Maretron	TMP100	1.0	1489901		Engine Room	1.1.1	1.1.2.7	Engine room Rear...	0	1.210	A	1
CE	Maretron	ALM100	1.0	1460041	0	Deck Alarm	1.0.6	1.0.6	Located Above Po...	0	1.301	A	2
1A	Maretron	SM100	1.0	1429902	2	Smoke Detectors	1.1.1	1.2.2.2		0	1.210	A	2
D4	Maretron	IPG100	1.0	1620002	1	Secondary	3.6.0	4.0.7.6	Secondary Ship's ...	1	1.301	A	3
08	Maretron	J2K100	1.0	1241755	0	Main Ships HVAC	1.0.13.2	1.2.1.1	Domestic Converter	0	1.301	A	3
A3	Maretron	VDR100	1.0	1760014	0	Primary Data Recorder	2.0.0.4	3.0.3.1	Connected Fwd Bus	0	2.000	A	4
28	Maretron	USB100	1.0	1160253	2		1.8.3	1.8.6.2	Connected to Nav...	2	1.210	A	3
04	Maretron	EMS100	2.0	1220251	0	Engine Main	1.4.2.4	1.4.3.1	12AY-W 1659HP	0	1.210	A	1
94	Maretron	NBE100	1.0	1240263	0	Fwd Ship's NMEA200...	1.0.0	1.1.0.1		0	1.301	A	3
8D	Maretron	DSM150	1.0	1800001	0	Captain's Quarters	1.4.17.5	1.6.6.3		0	2.000	A	3
88	Maretron	SMS100	1.0	1739904	0		1.0.1.1	-		0	1.301	A	2
78	Maretron	DSM250	2.0	1340328	2	Engine Room	1.4.14.4	1.6.6.3		2	1.301	A	13
15	Maretron	DSM250	3.0	1329901	4	Crew Quarters	1.4.16.3	1.6.6.3		4	2.000	A	13
14	Maretron	RIM100	1.0	1459902	1	Fire Suppression Syst...	1.1.3	1.2.2.2		19	1.301	A	1
D1	Maretron	NBE100	1.0	1240360	0	Aft Ship's NMEA2000 ...	1.0.0	1.1.0.1		0	1.301	A	3
C3	Maretron	DSM250	1.0	1309906	3	Fly Bridge	1.4.17.5	1.6.6.3		3	2.000	A	13
80	Maretron	TLM100	1.0	1501234	0	Bow Holding Tank	1.1.6	1.1.8.3		0	1.301	B	2
70	Maretron	FFM100	1.0	1679904		Main Engine	1.1.2.1	1.2.2.1	Main Engine Fuel ...	0	1.301	A	2
6A	Maretron	DSM250	2.0	1309902	0	Lighting Control	1.1.1.4	1.1.2.3		0	2.000	A	3

5. Changing the DeviceInstance from the CCGX command line

Instead of using Actisense or Maretron software, it is also possible to change the device instance from the Color Control shell. To get root access, follow these instructions: [Venus OS: Root Access](#)

Once logged into the shell, follow below instructions. Note that the example shown changes the device instance of a Skylla-i. The device instance of a VE.Can connected MultiPlus or Quattro can be changed as well. It will show as `com.victronenergy.vebus.socketcan_can0_di0_xxxx`.

Step 1. List the devices:

```
root@ccgx:~# dbus -y
com.victronenergy.bms.socketcan_can0_di0_uc10
com.victronenergy.charger.socketcan_can0_di1_uc12983
```

It shows a Skylla-i (the charger). di1 in the name means that it is currently on DeviceInstance 1.

Step 2. Change it, for example, to 4:

```
root@ccgx:~# dbus -y com.victronenergy.charger.socketcan_can0_di0_uc12983
/DeviceInstance SetValue %4
retval = 0
```

Step 3. Wait a few seconds, and double check:

```
root@ccgx:~# dbus -y
com.victronenergy.bms.socketcan_can0_di0_uc10
com.victronenergy.charger.socketcan_can0_di4_uc12983
```

Device instance changed successful!

DISQUS

~~DISQUS~~

From:

<https://www.victronenergy.com/live/> - Victron Energy

Permanent link:

https://www.victronenergy.com/live/ve.can:changing_nmea2000_instances?rev=1593285960

Last update: **2020-06-27 21:26**

